

Vol. 9, No. 1 January 2008

# North Dakota Simmental Scene

Official Publication of the North Dakota Simmental Association



North Dakota Simmental Association  
6050 Old Highway 2  
Berthold, ND 58718

PRESORTED  
FIRST CLASS  
U.S. Postage  
PAID  
Permit No. 580  
Manhattan, KS

# TNT SIMMENTALS

23rd Annual "Genetic Explosion" Sale

The **MOST POWERFUL** set of bulls ever offered!

Your **COMMERCIAL BULL HEADQUARTERS**, along with **BREED-LEADING HERDSIRES!**  
They are **THICK** and **DEEP** – All backed by the **TNT 100% GUARANTEE!**

Selling Approximately **160** Bulls  
(Including 16 18-mo-old bulls)

Purebred Black Sim • 3/4, 1/2 & 1/4 SimAngus  
Purebred Red Sim • 3/4, 1/2, 1/4 SimAngus  
Purebred 1A Red Angus

Friday

**FEBRUARY 8, 2008**

1:00 pm CST • At the Ranch • Almont, ND



**T318**  
SAV Traveler 004 x SR Franchise  
(Gunner's Granddam)



**T256**  
TNT Top Gun x Mr Fix-IT



**T404**  
TNT Gunner x Black Joker



**T242**  
TNT Gunner x Fortune 500



**T266**  
TNT Shock Absorber x TNT Twister



**T337**  
TNT Gunner x GW Stoptlight



**T205**  
Mytty In Focus x TNT Standout



**T298**  
LCC Marias x Lazy S Red Hawk



**S400**  
Remington Red Label x Preferred Stock



**T212**  
Brown Vacation x Grand Canyon

- Pay half sale day!
- Volume discounts!
- Feeding & delivery available!
- Ultrasound and performance data, along with current EPD's will be available!
- Majority homozygous polled!
- All Reds are non-diluters!
- All Blacks will be homozygous or heterozygous black verified!

For catalog or DVD, contact

## TNT SIMMENTAL RANCH

Kevin & Lynette Thompson

5125 53rd St • Almont, ND 58520-9731

(701) 843-8454 • (701) 843-7043 (fax)

kevinandlynette@westriv.com • www.tntsimentals.com

Sale will be broadcast live via the internet.

Just 15 mi. south of I-95 Exit 123 • Visitors always welcome!

# North Dakota Simmental Association Board of Directors

**Kelly Hanson, President**

11010 County Road 26  
Hannaford, ND 58448  
701-769-2241

**Pat Thorson, Vice President**

16644 51st Street SE  
Kindred, ND 58051  
701-371-8230

**Bob Grant, Secretary/Treasurer**

6050 Old Highway 2  
Berthold, ND 58718  
701-453-3218

**Gary Sys**

9400 205th Avenue SW  
Douglas, ND 58735  
701-722-3244

**Mike Johnson**

2262 44th Street  
McCanna, ND 58251  
701-397-5724

**Greg Myers**

12066 57th Street SE  
Kathryn, ND 58049  
701-924-8224

**Robert Gannaway**

14246 A 56th Street NW  
Williston, ND 58801  
701-875-6267

**Erika Kenner**

5606 57th Street NE  
Leeds, ND 58346  
406-581-1188

**Dwight Keller**

1573 County Road 136  
Mandan, ND 58554  
701-445-7350

**Doug Bichler**

130 83rd Street SE  
Linton, ND 58552  
701-254-4306

## Editor's Message...

*Greetings! I hope the New Year finds everyone happy and healthy! As I write this note, the Christmas and New Year holiday is now complete. What a wonderful time of year to share with family and loved ones.*

*Speaking of a wonderful time, how about the North Dakota Simmental Association Annual Meeting, Banquet and Sale! For those who were able to attend, the events in Bismarck were absolutely amazing! The amount of support the members of this Association give back is tremendous. The Annual Meeting was very well attended with guest speaker Annette Steffan from Heart River Genetics visiting with members about the process of embryo transfer. Newly elected ASA Trustee Kevin Thompson visited with the attendees about some of the things going on with the national association. The banquet hall at the Ramkota was busting at the seams, as the hotel staff needed to setup many additional tables to seat everyone. The NDSA Classic Sale was one of the best on record!*

*Finally, I would like to personally thank all of the advertisers of the Simmental Scene. It is only with your support that we can produce this magazine and I appreciate that very much.*

*Happy New Year!  
Todd Finke*

# North Dakota Simmental Scene

A publication of the North Dakota Simmental Association

Todd Finke, Sales  
35500 114th Avenue NW  
Berthold, ND 58718  
701-240-7711  
todd@edje.com

The following terms and conditions have been agreed on by the North Dakota Simmental Association Board of Directors and the North Dakota Simmental Scene Committee.

**Advertising Space Rates**

Size	BW	4C
Full Page	\$400	\$550
½ Page	\$300	\$410
¼ Page	\$200	NA
Business Card	\$150 (per year)	

**Advertising Deadlines**

Issue	Deadline
November	November 1st
January	December 20th
February	January 20th

**Terms**

All advertising accounts are due and payable as invoiced. Interest charges of 1% per month will be assessed to accounts that are 30 days past due.

**Delinquent Advertiser's Account**

Advertisers knowingly and expressly agree and consent that, whenever accounts receivable for an advertiser have not been paid as of 90 days from date involved, advertising privileges will be suspended until full payment has been received.

**Copy Changes**

Alterations in advertising copy, if requested after closing dates will be permitted only if time allows.

The North Dakota Simmental Association and the North Dakota Simmental Scene reserve the right to refuse any advertising copy at our sole discretion. The North Dakota Simmental Association and the North Dakota Simmental Scene assume no responsibility for the accuracy of the advertising content submitted. Advertisers assume all responsibility for the accuracy and truthfulness of submitted advertising containing pedigrees or statements regarding performance.

**Editorial Content**

Opinions expressed are those of the writer and not necessarily those of the North Dakota Simmental Association or the North Dakota Simmental Scene. Photographs and manuscripts are welcome, but no responsibility is assumed either while in transit or while in this office.

Produced by EDJE Technologies

Cover photo taken by Erika Kenner, Leeds, ND.  
Erika also took the photo that was featured on the November cover.

# Calendar of Events

## January

- 12-27 National Western Stock Show  
*Denver, CO*
- 19 Double J Farms Private Treaty Bull Sale Opening Day  
*Garretson, SD*
- 21 National Western Simmental Sale "The One-Vol. XIV"  
*Denver, CO*
- 24-26 KMOT-TV Ag Expo  
*Minot, ND*

## February

- 1 4E Simmentals' Uppin' the Ante Bull & Female Sale  
*Bismarck, ND*
- 2 Larson's TL Ranch Production Sale  
*Almont, ND*
- 3 Klain Simmental Ranch Annual Production Sale  
*Turtle Lake, ND*
- 7 Hoiby Simmentals Annual Production Sale  
*Rugby, ND*
- 8 TNT Simmentals 23rd Annual Genetic Explosion Bull Sale  
*Almont, ND*
- 9 Kenner Simmental Ranch 11th Annual Production Sale  
*Bismarck, ND*
- 10 Rydeen Farms Vision X Sale  
*Clearbrook, MN*
- 11 Haas Ranch Simmental Bull Sale  
*Mandan, ND*
- 11 Dakota Power Bull Sale  
*Valley City, ND*
- 11 Traxinger Simmentals Private Treaty Bull Sale  
*Claremont, SD*
- 12 Bata/Olafson Production Sale  
*Rugby, ND*
- 12 Hieggelke Simmentals Production Sale  
*Lisbon, ND*
- 13 Nelson Livestock Company Annual Bull Sale  
*Baker, MT*
- 13 Breeding for the Future Production Sale  
*Napoleon, ND*

## February continued

- 14 Lasse/Skillestad Ranches Annual Production Sale  
*Glendive, MT*
- 15 Dakota Xpress Simmental Sale  
*Bismarck, ND*
- 15 R&R Cattle Company Annual Bull & Female Sale  
*Chamberlain, SD*
- 16 Ellingson Simmentals Production Sale  
*Rugby, ND*
- 16 Kappes Simmental 20th Annual Holistic Approach  
Performance Production Sale  
*Aberdeen, SD*
- 17 Northern Plains Simmental Private Treaty Sale  
*Bowbells, ND*
- 19 Keller's Broken Heart Ranch Annual Production Sale  
*Mandan, ND*
- 23 Strommen Simmentals Private Treaty Bull Sale  
*Arthur, ND*
- 25 Hart Farms 32nd Annual Beef Builder Sale  
*Frederick, SD*
- 27 Spring Creek Simmentals/Red Rose Angus Bull Sale  
*Moosomin, SK*

## March

- 4 Doll Ranch Annual Production Sale  
*Mandan, ND*
- 14 Porter Ranches Bull Sale  
*Duffield, Alberta, Canada*
- 21 3C Christensen & NLC Ranch Annual Production Sale  
*Wessington Springs, SD*

## April

- 4 Edge of the West Production Sale  
*Mandan, ND*
- 5 Brant Farms Genetic Balance Production Sale  
*Hinckley, MN*
- 7 Kjelgaard Simmental Production Sale  
*Jamestown, ND*
- 26 Christensen Simmentals Production Sale  
*Wessington Springs, SD*
- 28 Deiter Bros 18th Annual Bull Sale  
*Faulkton, SD*

# Dealing With Extreme Winter Weather Conditions

It's wintertime on the northern plains and it's time to think about managing your cattle in an environment that, at times, can be extremely harsh. In this article, I'll give you some recommendations and advice on dealing with extreme winter weather conditions.

During these times, it's important to remember to be sure you remember your own personal safety and the safety of your family and employees is the most important thing. Don't lose sight of that as you attempt to brave extremely hazardous winter weather conditions to take care of your cattle.

Cattle can deal with harsh winter temperatures much easier as long as they remain dry and are sheltered from the wind. Anything you can do which minimizes exposure to freezing rain and wet snow will definitely help your cattle come through these storms in better condition. In addition, provision of a windbreak will also help cattle conserve energy. Providing cattle bedding in the form of straw or crop residues will also help cattle better deal with cold conditions.

In feedlot and drylot feeding operations, removing snow from pens before it melts and causes muddy conditions will also pay dividends. Muddy conditions will result in poor cattle performance, increased feed intakes, and increased disease incidence, especially in young calves.

Cold conditions result in an increase in maintenance energy requirements and as a result, you should focus your attention on providing more energy in the diet during periods of extremely cold weather. This can be in the form of higher quality roughage, supplemental byproducts, or cereal grains.

Extreme cold conditions can also cause frostbite. Especially sensitive areas include the teats of lactating cows and the scrotum and testicles in bulls. In cows, you may not notice the frostbite until calf growth is reduced because the cow refuses to let the calf nurse affected teats. For bulls, frostbite damage of the testicles will result in problems with sperm production 45 to 60 days following the frostbite injury. Be sure to have a breeding soundness exam prior to the breeding season to ensure a successful breeding season.

I hope these tips will help you endure this extremely challenging winter many of you are facing. For more detailed information regarding these topics please see this web site: <http://www.ag.ndsu.nodak.edu/coping/cattcope.htm>



By Greg Lardy,  
NDSU Animal and  
Range Sciences

## Photo Contest

The North Dakota Simmental Association sponsored a photo contest again this year. Pictures were to be color, 8" x 10" and of Simmental cattle. Awards were given for three places in youth and adult divisions. All entered pictures will not be returned and will become the property of NDSA for future use in advertisements.



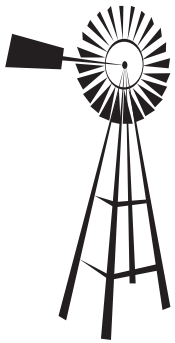
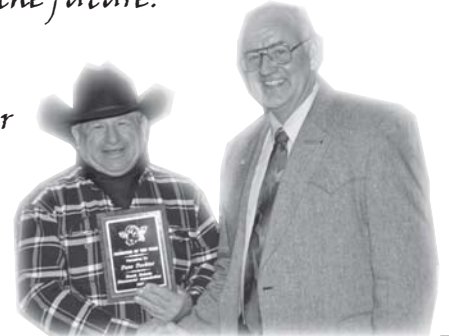
The winners were announced at the annual banquet held on Friday, December 14, 2007.

To view 2007 entries and winners go to...  
[www.northdakotasimmental.com](http://www.northdakotasimmental.com)

Thanks to all those who participated again this year.  
The pictures were wonderful. Well done!

I would like to thank the North Dakota Simmental Association for naming me the 2007 Promoter of the Year. It is a great honor to be recognized by such a prestigious organization! Thank you for your past support and I look forward to working with you in the future!

Thank You  
Dave Dockter



# NORTHERN PLAINS SIMMENTALS

JR & Miranda Aufforth  
Bowbells, ND 58721  
701-377-2870

## 2nd Annual Private Treaty Bull Sale

At the Ranch northeast of Bowbells • February 17, 2008

Selling 25 Stout Performance Simmental Bulls • Solid Black & Red Purebred Simmental Bulls



**HC Hummer**

Selling several sons of this popular calving ease sire!



**Winchester  
HR P8315**

Selling many sons of this low birth weight sire!

### Consignments to the NW North Dakota Select Sale:

6 AI Sired and AI Bred • Bred Heifers • 3 AI Sired Open Heifers

Plan to attend the "Select" Sale on March 8, 2008 in Stanley, ND.

From Head to Tail ...  
Maternal to Rail ...



# Klain Simmental Has You Covered!



## KSR Warrior 218T

Feb. 15 • 82 lbs • 681 lbs • Brook Warrior x Abner • Pld  
CE BW WW YW MCE MM MW CW YG MB  
7 -1 37 61 4 8 26 4 .00 .10

Warrior is a true curve-bender bull – low birth weight with high growth. He comes from a cow family with strong EPDs.



## KSR Encore 303T

Feb. 12 • 101 lbs • 727 lbs • Cmmndero x I'll Be Blk • Pld  
CE BW WW YW MCE MM MW CW YG MB  
7 2 44 72 5 6 28 -7 .08 .15

This bull boasts of an Elite Award granddam and an excellent mother. He will be a female producer and a front-pasture bull.



## TT Dodge 386T

March 12 • 102 lbs • 731 lbs • Legacy x Trnsfsn • Pld  
CE BW WW YW MCE MM MW CW YG MB  
10 3 37 61 3 -6 18 1.1 .00 .05

TT Dodge is moderate framed, deep and thick. These Legacy sons are all thick-topped, big-bodied bulls. Six sons sell.

26<sup>th</sup> Annual Production Sale  
Saturday,  
Feb. 2, 2008

1:00 pm • Turtle Lake, ND  
Turtle Lake Weigh Station

*Selling:*  
**62** Yearling Simmental Bulls  
(22 red, 40 black)  
**10** Open Females



## TT Power Pack 84T

Feb. 19 • 102 lbs • 807 lbs • Power Line • Pld  
CE BW WW YW MCE MM MW CW YG MB  
0 1.6 39 72 0 13 33 1.6 .00 .16

TT Power Pack has been impressing visitors all summer. He had a 116 WW ratio in his contemporary group. He will add performance and pounds.



## KSR Reliant 326T

Feb. 19 • 83 lbs • 725 lbs • Sarge x I'll Be Black • Pld  
CE BW WW YW MCE MM MW CW YG MB  
4 -2 34 52 5 4 21 -11 .05 .12

Another son of the great I'll Be Black daughter, 326M, with the proof "Reliant." 114 BW ratio, 109 WW ratio. Thick-topped, real meat bull.

Bred Cows and Heifers Available  
Private Treaty at the Ranch

36 Years Performance Testing • 12 Years Ultrasound Testing

*Uniformity from Us Creates Uniformity for You!*

# KLAIN SIMMENTAL RANCH

## DOUBLE T SIMMENTAL

Tim & Tam Clark  
(701) 448-2815

1999B 18th St NW • Turtle Lake, ND 58575



Durnell & Darcy Klain  
(701) 448-2408

1364 20th St NW • Ruso, ND 58778

Leonard & Shirley Klain  
(701) 448-2582

1999A 18th St NW • Turtle Lake, ND 58575



Home of 36 ASA Cow Awards and  
43 Terminal Cow Awards

**New Earlier Sale Date!**

**Wednesday**

**February 13, 2008**

**1:00 PM at the Ranch, Wibaux, MT**

**– Offering Progeny Representing These Outstanding Sires –**

**Selling 90 bulls**

**Including:**

**30 – Outstanding Purebred Angus Bulls**

**54 – Polled and Black Performance  
Selected Simmental and SimAngus Bulls**

**6 – Top Notch Red Purebred Simmental  
and SimAngus Bulls**



**BF M218 Snake Eyes**

**Lucky Dice x Black Joker**

EPDs... 13 0 46 78 4 5 28

Carcass EPDs... 15.5 -.1 -.13 .05 .9



**HSAF Bando 1961**

**SAF 598 Bandi 5175**

**x N Bar Emulation EXT**

EPDs... - -5 43 93 - 20 42

Carcass EPDs... -4.4 .37 .51 .1 -.41

**COMMITMENT IS  
THE KEY.**

*Our commitment is to  
select for:*

- Optimum Reproduction
- Optimum Production
- Optimum Product



**WS Beef Maker**

**Shear Force x R Plus Red Ribeye**

EPDs... 12 1 33 62 3 9 26

Carcass EPDs... -11.0 -.14 .45 0 .28

Check our website for updated bull pictures and information.

[www.nelsonlivestockco.com](http://www.nelsonlivestockco.com)



5831 Hwy 7 • Wibaux, MT 59353

Tom Nelson • 406-588-3371 • nlcsm@middrivers.com

Warren Nelson • 406-588-3351

Brent Nelson • 406-588-3030 • brentkim@middrivers.com

# LASSLE SKILLESTAD PRODUCTION SALE

15th Annual Production Sale

February 14, 2008 • Glendive, MT



Selling 150 Simmental Bulls  
Polled • Solid Black and Solid Reds  
Purebred • Simmental/Angus Hybrids • Angus



**LRS T107** (1/2 SM 1/2 AN)  
ES Dakota x Alberda Traveler  
BW: 90 lbs. WW: 838 lbs.



**SRS 24T** (PB)  
THSF Freedom x BTS Night Rider  
BW: 92 lbs. WW: 758 lbs.

Two Great Programs - One Great Sale

Clay Lassle  
Glendive, MT 59330  
406-486-5584



Jim Skillestad  
Glendive, MT 59330  
406-377-3809

# LITTLE BITTERROOT RANCH ANNUAL PRODUCTION SALE

Saturday, February 16, 2008 • 1:00 PM (MST)  
Missoula Livestock Exchange • Missoula, Montana



**LBR ROYAL DESTINY T27**  
Sire: LBR Crockett MGS: Black Destiny  
**EPDs: 7 3 37 66 4 6 25**  
CW: 1.6 YG: -.01 MB: .11 BF: .02 REA: .2  
API: 100 TI: 66

To view complete catalog and color  
Pictures online please go to:  
[www.EDJECattle.com](http://www.EDJECattle.com)  
For your convenience bidding will be started  
February 1st on our website. For bidding procedure  
go to our EDJE website.

**SELLING 47 LOTS  
ALL POLLED**

**Simmental, Red & Black  
Angus Hybrids**

26 Black Simmental Purebreds  
9 Red Simmental Purebreds  
9 Black Angus Hybrids  
3 Red Angus Hybrids

**Sires Represented**

LBR Crockett, Preferred Beef, Figure This, Beef  
Maker, Shear Force, Legacy, Duame Legend,  
First Dream, B/R New Frontier, Morgans  
Direction, Cherokee Canyon and others.

**Ultrasounded, Fertility Tested,  
Performance Tested Since 1970,  
Guaranteed, Complete EPDs**



**Frank & Marilyn Carr**

Route 3, Box 456 • Hot Springs, MT 59845  
**406-741-2523**  
Shannon & Jeannette Carr • 406-741-2769

**PRIVATE TREATY  
FEMALES FOR SALE**



## 30th Annual Production Sale

Tuesday, February 26th  
1:30 pm cst  
Kist Livestock, Mandan ND

55 Thick beef bulls  
10 Red bulls  
48 Simmental/Angus % bulls  
10 Bred Heifers



**XL 736** SV R717 \* Nichols Legacy  
Blk, Simm/Angus, 11-29-07 wt: 1125

View Bulls online at:  
[www.xlsimmental.com](http://www.xlsimmental.com)

Feeding arrangements available. Deduct  
\$50 if you haul your bull home sale day.  
Free delivery in the Dakotas. 5% discount  
on 3 or more bulls. 38 years performance  
testing Simmental. Ultrasound tested.  
Satisfaction Guaranteed.



**XL 718** LJC Mission Statement \* FR Rezult  
Red, Simm/Angus, 11-29-07 wt: 1070

Bill Larson  
2406 8th Ave NE  
Lemmon, SD 57638  
701-376-5360

## James Creek **SIMMENTAL** Your northern source for Fleckvieh genetics

**Private Treaty Bull Sale**  
February 5, 2008 • 1 pm at the farm  
**Full Fleckvieh and Fleckvieh Sired Yearling Bulls**

These bulls are all beef and no  
fluff. They are being feed to gain  
3.5 lbs. a day and are on pace to  
do that and more. Several of these  
bulls are embryo transplants that  
have tremendous cow families on  
both sides of their pedigrees.



Some of the sires represented  
are: IPU Bronson, MFI Whistler,  
Knight Mr. T and JCS Commander.

Performance and carcass data will  
be available after January 15, 2008.  
Check our website for more details.

*Brink Security*  
Our new Full Fleckvieh herd sire  
Semen available Spring 2008  
BW: 92 WW: 881 YW: 1521  
ADG: 4.13 FS: 6.7



**Heathe & Holly Widicker**

4664 Main St. • Heaton, ND 58418  
701-984-COWS (2697) • [jescow@daktel.com](mailto:jescow@daktel.com)  
[www.jamescreeksimmental.com](http://www.jamescreeksimmental.com)



# Bullnanza

*Hoiby Simmental*  
Selling 40 Simmental & SimAngus Bulls

**Thursday,  
FEB. 7, 2008**  
1:00 pm CT

**Rugby Livestock  
Rugby, North Dakota**

**Y**ou won't see Hoss

or Little Joe at this Bullnanza, but you will see 40 high-performance red and black Simmental and SimAngus bulls bred with commercial cattle producers in mind. We invite you to join us for this special event and to preview the offering at the ranch at any time between now and then.



**720**

**Bennett Total x Perfector • SimAngus**  
Adj. WW: 749 • EPDs: 0 0 35 73 0 4 22



**744**

**Trademark x Network**  
Adj. WW: 849 • EPDs: 9 3.6 56.4 90 6.3 6 34



**703**

**Rezult x Big Sky**  
Adj. WW: 834 • EPDs: 7.3 0 37 59 5 5 24



**738**

**Trademark x Network**  
Adj. WW: 793 • EPDs: 8 3.8 53 86 5 3 30



**704**

**Gold Mine x Hummer x (Big Bertha)**  
Adj. WW: 769 • EPDs: 11 -1 38 65.4 1 7 26

**Sires include:**

- ES Vegas
- Gold Mine
- Trademark
- Red Rock
- Bennett Total (Angus)



**725**

**Trademark x Fortune 500**  
Adj. WW: 918 • EPDs: 11 1.7 45 78 4 6 28.3

*This bull was the grand champion at the 2007 North Star Classic.*

*For more info, contact us:*

**Hoiby  
Simmental  
Ranch**

Lyndon, Shelley,  
Paige & Levi Hoiby  
7980 101st Ave. NW  
McGregor, ND 58755  
701/546-4043

# North Dakota Simmental Association Classic Sale Results

December 15, 2007 - Bismarck, ND

**Sale Manager:** Thomas Livestock Services, MT  
**Sale Consultant:** Doug Parke, KY  
**Auctioneer:** Tracy Harl, NE

Number	Category	Average
38	Bred Heifers	\$3143
30	Open Heifers	\$2058
4	Embryo Lots	\$2625
1	Bull	\$7500
1	Donor Cow	\$8000
74	Genetic Lots	\$2800

## High Sellers

### Lot 2 \$8000

#### WS Dakota Rose M86, Donor Cow

Sired by: LCHMAN Bodybuilder  
 Consigned by: Traxinger Simmentals, Claremont, SD  
 Sold to: Spring Creek Simmentals, SK  
 and Sun Rise Simmentals, SK

### Lot 29 \$8000

#### BDV Sugar S29, Bred Heifer

Sired by: SRS Preferred Beef  
 Consigned by: Begger's Diamond V Ranch, Wibaux, MT  
 Sold to: Eklund Simmental, MT

### Lot 1B \$7500

#### BDV Respect 137S, Bull

Sired by: CNS Dream On  
 Consigned by: Begger's Diamond V Ranch, Wibaux, MT  
 Sold to: Pelton Simmentals, ND

### Lot 13 \$7000

#### THSR Shakira S619, Bred Heifer

Sired by: ES Kilowat  
 Consigned by: Triple H Simmentals, Hannaford, ND  
 Sold to: Walnut Springs Farm, MI

### Lot 42 \$6400

#### KR Flo S35, Bred Heifer

Sired by: THSF Freedom  
 Consigned by: Kaelberer Ranch, New Salem, ND  
 Sold to: Kunkle Simmentals, ND

### Lot 41 \$5750

#### SRS Suzy S17, Bred Heifer

Sired by: LRS Preferred Stock  
 Consigned by: David & Cindy Durheim/Skillestad Ranch, MN  
 Sold to: Berger Livestock, MT

### Lot 27 \$5200

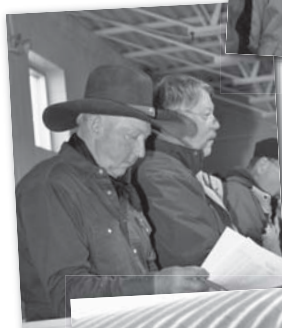
#### Miss Trax S605, Bred Heifer

Sired by: Remington Red Label  
 Consigned by: Traxinger Simmentals, SD  
 Sold to: Kinn Simmentals, ND

A capacity crowd witnessed one of the top NDSA Simmental Sales on record. With buyers registered and purchasing cattle from eight states and one Canadian Province.

## Volume Buyers:

Eklund Ranch, MT purchased four head  
 SRF Simmentals, ND purchased four head  
 Six different buyers purchased three head each



*Thanks for attending!*



"Mark of Performance"

# Traxinger Simmentals

## PRIVATE TREATY BULL SALE

February 11, 2008 • At the farm • Claremont, SD  
Selling 50 Powerful Herd Bulls • Reds & Blacks



### ◀ LRS HEADLINER

ES Dakota x Shamrock  
EPDs: 5 2.8 52 85 6 3 29  
Headliner was our pick of the 2006 Lassle Bull Sale. This is his first calf crop and they are impressive!

*Selling Sons of these Outstanding Herd Sires!*

### KS BRAVADO ▶

FR Rezult x Black Cisco  
EPDs: 12 -1.0 25 43 6 11 23  
This Homozygous Polled herd sire has been used very successfully on heifers.



### ▼ SV NORTHWEST FIGURES

3C Full Figures x Black Shamrock  
EPDs: 13 1.0 50 78 7 3 28  
This Homozygous Polled, Heterozygous Black herd bull has an EPD spread second to none. His progeny calve easy, grow fast and are the right kind!



### ◀ WS DAKOTA ROSE M86

Sold to Spring Creek Simmentals & Sun Rise Simmentals, SK

### MISS TRAX S605 ▶

Sold to Kinn Simmentals, ND



*For more pictures and sale information, go to...*

**WWW.TRAXINGER.COM**

*Thank You*

A special thank you to Kinn Simmentals, ND; Spring Creek Simmentals & Sun Rise Simmentals, SK; and Clearwater Simmentals, IN for their purchases at the NDSA Classic Sale. Your confidence in our program is very much appreciated!



"Mark of Performance"

**Traxinger Simmentals  
Mike & Terri Traxinger**

11409 411th Avenue  
Claremont, SD 57432  
605-294-5812

mtrax@nvc.net

# BULLS FOR SALE !!!

Selling Private Treaty and at the  
Northwest North Dakota Select Sale, Stanely, ND • Saturday, March 8, 2008 • 1:00 PM



**T 701**  
1/2 SimAngus • BW 75 • ww 710  
ES Black Legend x Bando 9074  
- • -1.1 • 26.1 • 51.1 • - • 4.7 • 17.7



**T 720**  
1/2 SimAngus • BW 89 • ww 768  
Bennet Total x Goldmine  
- • -2.8 • 24.4 • 53.6 • - • 10 • 22.2



**T 725**  
Purebred • BW 105 • ww 784  
Powerline x Desperado  
4.8 • 1.8 • 36.4 • 66.2 • 4.8 • 7.4 • 25.6



**T 734**  
Purebred • BW 95 • ww 828  
ES Dakota x Harts Casino  
4.6 • 2.9 • 38.1 • 66.3 • 5.1 • 4.1 • 23.2



**T 735**  
Purebred • BW 102 • ww 712  
Winchester x Red Reality  
10.1 • 0.0 • 27.1 • 49.5 • 2.6 • -.4 • 13.2



**T 738**  
Purebred • BW 106 • ET • ww 813  
Powerline x Desperado  
4.8 • 1.8 • 36.4 • 66.2 • 4.8 • 7.4 • 25.6

## Sires Represented...

Powerline  
ES Dakota  
First Dream  
NoPhalt  
Winchester  
Shear Force  
ES Black Legend  
Bennet Total



**T 754**  
Purebred • BW 92 • ET • ww 789  
Nophalt x Fortune 500  
6.2 • 2.1 • 39.1 • 77.3 • 1.4 • 6.5 • 26

## Sys Simmentals

Gary and Derek Sys  
9400 205th Ave. SW  
Douglas, ND 58735  
701.722.3244



# KELLER'S BROKEN HEART RANCH

Annual Sale - **TUESDAY, FEB. 19, 2008**  
1 PM • KIST LIVESTOCK AUCTION • MANDAN, ND

KBHR DONATION HEIFER TO ND SIMMENTAL ASSOC.



**KBHR T121** SIRE: TSF RED DREAM WW: 635  
EPDs: 7.4 2.8 35 61 2.8 7 24



**KBHR T150** SIRE: GFI PURE POWER WW: 770  
EPDs: 8.4 2.4 44 80 6.4 12 33

*Selling:*  
**75 High-Performance Red & Black Simmental Bulls**

**80 Yearling Simmental Heifers**



**KBHR T041** SIRE: TFS RED DREAM WW: 710  
EPDs: 6.7 3.4 35 61 4.0 4 21



**KBHR T224** SIRE: GFI PURE POWER WW: 720  
EPDs: 6.9 2.5 42 69 5.7 8 28



**KBHR T170** SIRE: LBR CROCKETT WW: 768  
EPDs: 4.0 0.7 28 58 3.6 6 20



**KBHR T151** SIRE: SRS NETWORK WW: 772  
EPDs: 6.9 2.1 39 69 4.1 7 27



**KBHR T107** SIRE: TFS RED DREAM WW: 790  
EPDs: 6.3 2.6 39 68 3.9 7 26



**KBHR T143** SIRE: DSR REAL RED WW: 798  
EPDs: 5.8 1.8 26 55 0.8 3 16

**“Simmental Beef on the Cutting Edge!”**



**Dwight & Susan Keller Family** • Luke, Jake & Tess • Eugene and Helen Keller  
kbhr@westriv.com • 1573 Co. Road 136 • Mandan, ND 58554  
(701) 445-7350 • Cell: (701) 471-5215 • (701) 445-7453  
**www.kbhrrsimmental.com**

# Begger's Diamond V Ranch

Big Sky Genetic Source Bull Sale

Wednesday, February 6, 2008

At the Ranch, Wibaux, MT • 12:30 pm • Lunch at 11:00 am

Directions: 4.5 miles south, 1.5 miles east, 2.75 miles south of Wibaux.

## 150 Simmental and Angus Bulls Sell

30 Halfblood SimAngus Optimizers

30 Angus Bulls

75 Black Simmental Bulls

15 Red Nondiluters

50 Fall born 18-month-old bulls

**Bulls are 6 to 7 Frame:**

- Bred for calving ease, fast growth, efficiency, maternal and carcass quality.
- Bulls are developed for ranchers on a high roughage ration with very little starch and plenty of exercise.
- Every bull has an efficient hard working mother that does her job in the tough environment eastern Montana dishes out.
- All bulls are polled and solid colored.
- Many are Homozygous Black.



Our halfblood Simmental Angus Optimizers are powerful. You can be assured these bulls are deep and thick, they will compliment your breeding program. They will sire feeder calves that will keep your calf buyer coming back for more. You will want to retain the heifers as brood cows, because they will be the profit making kind. Now is the time to add efficiency and value to your breeding program. You will be able to choose from black or red Angus genes and the breed's top Simmental genetics combined to offer elite calving ease, exceptional growth and superb efficiency in the pasture, in the lot, and on the rail. These bulls are culled for disposition, conformation and quality; only the best will sell.



We offer a powerful group of fall calved 18-month-old bulls. They are born on the range, developed on the range and then weaned in March. By June, they go back out and are foraged developed, they don't come back to the pens until December. They are big, stout, and athletic, they are ready to work and will stay together, they will be the cowman's kind.

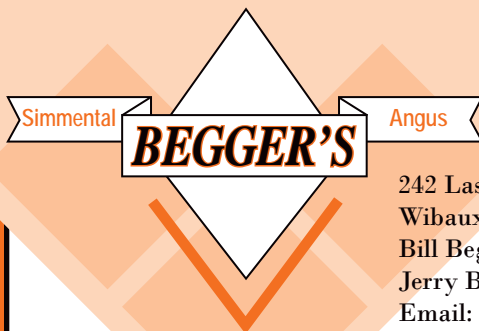


Our Angus bulls will take no back seat to any program anywhere. If you like Angus cattle that are moderate-framed with extra capacity and big rear ends, come take a look. These bulls are the kind that calve easy, grow fast, and keep their condition. Our customers say they won't melt and fall apart like so many seem to do, they are sired by some of America's finest Angus sires. Their dams are big ribbed, deep bodied brood cows, that have excellent udders and are problem free.



This fall we calved 100 cows out on the range, we checked them once a day to tag and weight the calves, we never saw a calf born. When it was over, every cow had a live calf and we had four extra calves. There were 17 first calvers in the mix and everyone calved in the pasture just like the mature cows. We can do this because we are confident that our cattle are the kind that reduce calving difficulties, but still maintain the genetics that grow fast and wean heavy. You will wear out a good pickup trying to find a set of cattle that can improve your bottom line any better.

Contact us for information regarding our website.



242 Last Chance Trail  
Wibaux, MT 59353  
Bill Begger (406) 795-8148  
Jerry Begger (406) 796-2326  
Email: darbegger@yahoo.com

# HAAS

## Simmental Sale

*Monday*

**February 11, 2008**

*New Time:* **1:30 pm CST**

**Kist Livestock Auction • Mandan, ND**

**Sale Day Phone: 701-663-9573**

*Selling:*

# 55

**Outstanding  
Performance  
BULLS**

*Half Blacks*

*Half Reds*

*Many  
Non-Diluted Reds*

*Polled Bulls*

## HAAS RANCH

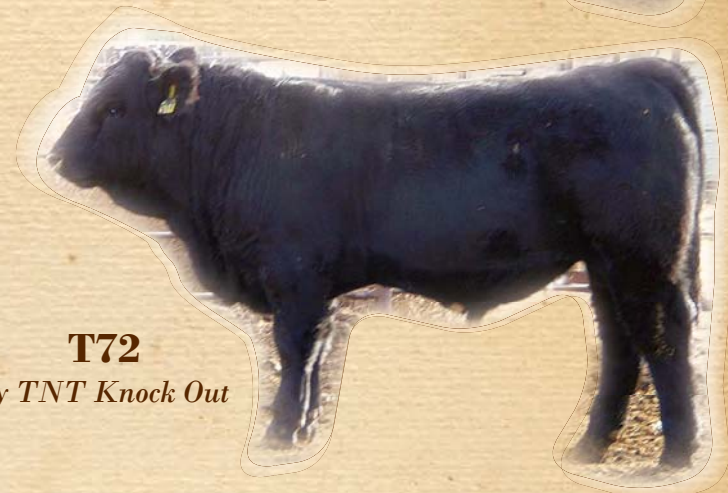
Larry & Tom Haas

Elgin, ND 58533 • 701-584-2244

*Directions from Elgin: 8 miles south, 2 miles east,  
1/2 mile south & 1/2 mile east*



**T104**  
*by TNT Knock Out*



**T72**  
*by TNT Knock Out*



**T91**  
*by LBR Crockett*



**T98**  
*by LBR Crockett*



**T48**  
*by TNT Dynamite  
Black*

# Spring Creek Simmentals / Red Rose Angus

# BULL SALE

**FEBRUARY 27, 2008**

on the farm

*Moosomin, SK*



## **MBJ 33T**

Hurricane x Kansas Tank  
Homozygous Polled

CE	BW	WW	YW	MCE	MWW	MM
4	3.1	44	74	1	29	7



## **MBJ 8T**

Red Tank 57P x Black Creek  
Scurred

CE	BW	WW	YW	MCE	MWW	MM
9	2.1	34	59	-1	28	11



## **MBJ 1S**

Red Tank 57P x Black Creek  
Homozygous Polled

CE	BW	WW	YW	MCE	MWW	MM
9	2.1	34	59	-1	28	11



## **MBJ 71T**

Red Tank 57P x Black Creek  
Homozygous Polled

CE	BW	WW	YW	MCE	MWW	MM
9	3.1	36	62	-1	26	8



## **MBJ 51T**

Dream On x Power Cat  
Homozygous Polled

CE	BW	WW	YW	MCE	MWW	MM
10	1	41	68	9	19	-2



## **MBJ 38T**

Red Tank 57P x Black Creek  
Homozygous Polled

CE	BW	WW	YW	MCE	MWW	MM
9	3.1	36	62	-1	26	8



## **MBJ 93T**

Express x Daylight  
Homozygous Polled

CE	BW	WW	YW	MCE	MWW	MM
5	2.1	29	47	1	23	8



## **MBJ 95T**

Red Sky x Kansas Tank  
Homozygous Polled

CE	BW	WW	YW	MCE	MWW	MM
3	0.1	32	55	-1	20	4



## **MBJ 123T**

Gidsco Appollo x Gangster  
Full Fleck

CE	BW	WW	YW	MCE	MWW	MM
0	4.7	40	69	6	33	13

All bulls are Guaranteed  
Exportable & we will  
aide in Delivery.

Bulls have an "Igenity DNA  
Profiles" and are  
BVD-PI Negative

85 plus sale bulls are  
pictured on our web site:  
[www.springcreeksimmentals.com](http://www.springcreeksimmentals.com)





### MBJ 1T

Black Tank 63P x Joker  
Inconclusive polled, Homozygous Black

CE	BW	WW	YW	MCE	MWW	MM
8	4.4	41	73	1	27	6



### MBJ 14T

Black Tank 63P x LRS Maverick  
Homozygous Polled • Heterozygous Black

CE	BW	WW	YW	MCE	MWW	MM
8	2.5	36	59	3	22	4



### MBJ 24T

Black Tank 63P x black Creek  
Scurred • Heterozygous Black

CE	BW	WW	YW	MCE	MWW	MM
8	3.8	36	59	0	26	8



### MBJ 37T

Red Tank 57P x Black Shadow  
Homozygous Polled • Heterozygous Black

CE	BW	WW	YW	MCE	MWW	MM
7	2.8	35	61	0	25	7



### MBJ 83T

Black Tank 63P x Pedro  
Homozygous Polled • Homozygous Black

CE	BW	WW	YW	MCE	MWW	MM
9	3.1	34	60	3	25	8



### MBJ 99T

Black Tank 63P x Black Creek  
Homozygous Polled • Heterozygous Black

CE	BW	WW	YW	MCE	MWW	MM
10	2.5	30	51	0	25	10



### MBJ 104T

Black Tank 63P x Pedro  
Homozygous Polled • Homozygous Black

CE	BW	WW	YW	MCE	MWW	MM
9	3.1	34	60	3	25	8



### MBJ 113T

Black Tank 63P x Nophalt  
Homozygous Polled • Heterozygous Black

CE	BW	WW	YW	MCE	MWW	MM
9	5.9	44	80	1	31	9



### MBJ 166S

Black Tank 63P x Agenda  
Inconclusive Polled • Heterozygous Black

CE	BW	WW	YW	MCE	MWW	MM
9	3.5	36	57	2	25	7



#### Selling:

- 27 Black Simmentals
- 32 Red Simmentals
- 4 Full Fleck
- 6 Black Angus
- 12 Red Angus
- 6 Bestcross Hybrids

#### Brian McCarthy & Family

Box 467  
Moosomin, SK  
S0G 3N0  
Ph: (306) 435-3590  
Cell: (306) 435-7527

E-mail: [bmccarthy@sasktel.net](mailto:bmccarthy@sasktel.net)  
[www.springcreeksimmentals.com](http://www.springcreeksimmentals.com)



PO Box 1409  
Crossfield, Alberta T0M 0S0  
Ph: (403) 946-4999  
Fax: (403) 946-4919



E-mail: [info@bouchandlivestock.com](mailto:info@bouchandlivestock.com)  
Website: [www.bouchandlivestock.com](http://www.bouchandlivestock.com)

# Spring Creek Simmentals



02/07    **TMPF Keep Dreamin x PTL Jet Top H150**  
 - • 2.4 • 37.6 • 62.8 • - • 5.7 • 24.5



02/07    **Brooks Above Par x CNS Dream On L186**  
 9.3 • 2.3 • 40.2 • 68.1 • 0.7 • 1.5 • 21.6

# UPPINANTE

The



**7th Annual Bull & Female Sale**  
**Friday, February 1, 2008 • 1:00 PM**  
 Farmer's Livestock Exchange, Bismarck, ND

**Accommodations:**  
 Expressway Suites  
 Bismarck, ND  
 1.888.774.5566

**Selling:**

- 60 Simmental & SimAngus Yearling Bulls
- 8 reds including TNT Gunner x Desa Rae sibs
- 40 Commercial Simmental & SimAngus Bred females



12/06    **CNS Dream On L186 x WLM Rio Bravo M70**  
 10.4 • 0.5 • 28.6 • 51.7 • 7.7 • 8.4 • 22.7



02/07    **SRS Royal Flush x LRS Big Country 37E**  
 5.3 • 3.1 • 40 • 75.2 • 1.1 • 4.6 • 24.6

## C/K Simmentals    4E Simmentals

**Kelly Erickson**  
 6219 39th St. NW  
 Plaza, ND 58771  
 701.497.3749 • 701.898.1583  
 simbeef@rtc.coop

**Robert Erickson Family**  
 6317 42nd St. NW • Plaza, ND 58771  
 Shane • 701.497.3558 • 701.898.1216  
 Kipten • 701.497.3382  
 Robert • 701.497.3381



**David Hendrickson, Owner**  
**Doug Smith, Manager**  
 4440 W. St. Road 32  
 Winchester, Indiana 47394  
 765.584.5894 • 765.584.0143 fax  
 www.silvertownefarms.com  
 stfarms@globalsite.net

# BREEDING FOR THE FUTURE

## 10th Annual Joint Production Sale

Wednesday, February 13, 2008

1:00 pm CST, Napoleon, ND

Selling: 60 Powerful Simmental Bulls

Sires Represented:

Hook's Shear Force, WS Beef Maker,

Hart's Four Lane, TNT Top Gun,

TNT Dynamite Black, TNT Horizon, LBR Crockett



**WS Overload T166**

Hart's Four Lane x 600U

BW: 105 • WW: 733

EPDs: 5 1 36 66 5 3 21

Homozygous Black and Homozygous Polled. Moderate-framed, heavy-muscled bull with exciting carcass potential. Dam was #1 for IMF and #2 for REA as a calf.



**WS My Force T123**

Hook's Shear Force x DCR Ribeye N138

BW: 90 • WW: 779

EPDs: 13 -1 41 73 1 10 31

Homozygous Polled and Heterozygous Black. Moderate-framed bull with explosive growth and hard-to-find birth to yearling spread. BW index: 106; WW index: 116.



**CDI 41T**

Hook's Shear Force x STF Montana Black

BW: 94 • WW: 789

EPDs: 10 -1 33 57 -2 3 20

Stylish Shear Force son that posted a 108 WW index out of a first calf heifer. Ranks in top 1% for marbling and is heterozygous black, homozygous polled.



**CDI 1T**

TNT Top Gun x SSF Red Demetrius

BW: 88 • WW: 766

EPDs: 11 -1 37 64 2 1 20

Typical Top Gun son - thick made with excellent muscle expression and growth. Indexed 106 for BW and 105 for WW. More Top Gun sons like him sell.



**CDI 17T**

TNT Top Gun x Shear Force

BW: 96 • WW: 807

EPDs: 13 0 41 73 2 7 27

A solid red Top Gun calf out of one of our best producing Shear Force daughters. She raised the CDI high-seller last year. Indexed 111 for WW. Homozygous Polled.



**WS Beef Master T113**

WS Beef Maker x Freedom

BW: 93 • WW: 744

EPDs: 9 1 40 74 4 7 27

Non-diluter, calving ease prospect. Ranks in the top 20% or higher for CE, WW, YW, MCE, CW, YG, BF & REA. BW index: 103; WW index: 108.



**WS Pure Beef T149**

GFI Pure Power x Branded Beef

BW: 98 • WW: 747

EPDs: 7 1 49 78 10 10 35

Homozygous Polled and solid black with breed-leading maternal. He ranks in top 10% for WW, YW, MCE, MM, MWW, YG & BF. BW index: 101; WW index: 111.



**WS Midnite Express T133**

Hart's Four Lane x Ruff's Road Top

BW: 101 • WW: 810

EPDs: 3 1 44 75 3 5 27

Homozygous Black powerhouse with outcross bloodlines. BW index: 102; WW index: 112.



**CDI 34T**

600Unique x Shear Force

BW: 89 • WW: 713

EPDs: 8 1 37 67 4 8 27

Our only bull calf by Unique that gets better and better every day. His Shear Force dam has a Marb EPD of .55. Heterozygous Black.

### Wilkinson Farms Simmentals



Terry & Cathy Schlenker Family  
7649 49th St. SE  
Montpelier, ND 58472  
701-489-3583 • Terry: 701-320-2171  
Aaron: 701-269-8271  
email: eatbeef@daktel.com

We request no Friday night or Saturday calls, please. • Visitors welcome!

### OPEN HOUSE

at  
WILKINSON FARMS

Monday, February 4th  
11:00 am - 5:00 pm

Lunch served all day

### C Diamond Simmentals



Neil & Carmen Nicholson Family  
4720 34th Ave. SE  
Dawson, ND 58428  
701-327-4438 • Neil: 701-391-6205  
Chris: 701-391-6904  
email: cdiamond@bektel.com

www.cdiamondranch.com

# Bata Brothers/Olafson Brothers Joint Simmental Bull and Female Sale

February 12, 2008 • 1:00 PM CST

Rugby Livestock Auction, Hwy. 2 West • Rugby, North Dakota

## Selling:

80 Bulls

70 Reg. Bred Heifers

• visit our website at [www.bataolafson.com](http://www.bataolafson.com) for updated information and videos •

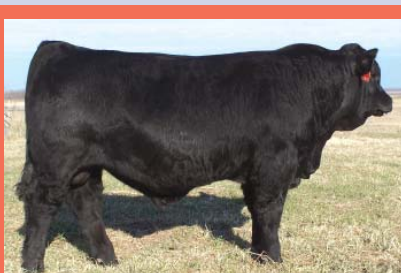
This auction will be broadcast live at [www.edjecast.com](http://www.edjecast.com).

Real time bidding will be available via the internet.



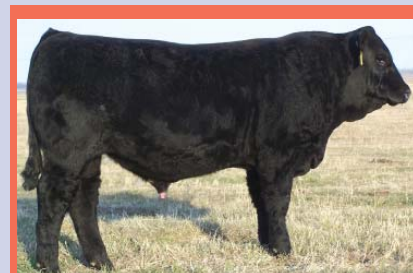
**OLF T43**

Ellingson Legacy x OLF Lady Trooper R358  
EPDs: 13.0 -0.4 35 65 5 5 22  
1/28/2007 BW: 86 ADJ WW: 813



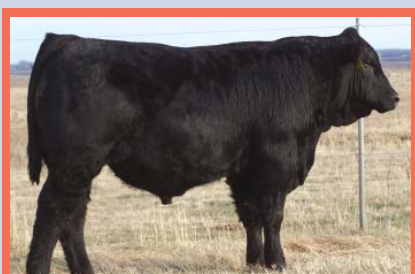
**OLF T86**

PPSR Nophalt x OLF Lady Legacy N539  
EPDs: 5.1 0.9 37 73 2 5 23  
2/6/2007 BW: 83 ADJ WW: 781



**OLF T146**

ES N5303 x OLF Lady Irish L28  
EPDs: 10.4 0.6 34 69 3 8 25  
2/17/2007 BW: 93 ADJ WW: 797



**OLF T196**

BF P465 Coach x OLF Miss Cruzler N683  
EPDs: 5.4 2.3 50 91 4 1 27  
3/10/2007 BW: 87 ADJ WW: 771



**OLF Lady Triathlon S587**

Our consignment to the 2007 ND  
Simmental Classic Sale in Bismarck, ND.  
More outstanding females like her will  
sell on February 12, 2008 in Rugby, ND!



**BBS Shot Gun T6**

TNT Top Gun x BBS Miss Redline R71  
EPDs: 8.1 0.0 46 77 1 2 25  
2/18/2007 BW: 72 ADJ WW: 783  
*One of the top herdsire prospects we have ever offered.*



**BBS Tanker T16**

LFE Red Tanker x BBS Miss Expo H6  
EPDs: 4.0 3.0 36 60 1 5 23  
2/24/2007 BW: 80 ADJ WW: 782  
*Our top performance bull, 917# on 11/1. See dam in catalog.*



**BBS Final Cut T36**

TNT Top Cut P274 x BBS Black Beauty J106  
EPDs: 5.0 2.8 60 97 2 2 32  
3/11/2007 BW: 90 ADJ WW: 798  
*3 full brothers sell. Many bulls being tested for homo black.*



**BBS Redeye T211**

BBS Redeye P35 x BBS Miss Beauty M14  
EPDs: 4.1 2.0 44 70 3 2 24  
2/12/2007 ADJ WW: 728  
*From our top Redcoat x J109 flush cow. 4 sons sell.*

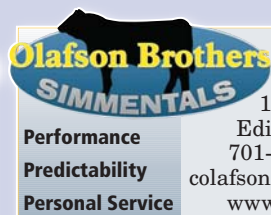
**Sale Day Phone:  
701-776-6393**

## Reference Sires:

Preferred Beef • BBS Redeye P35  
PPSR Nophalt • TNT Top Cut • TNT Top Gun  
BF P465 Coach • BBS Redneck M25  
RFS Maximum • E. Legacy M229  
BF N324 Triathlon • THSF Freedom  
Meyer's Redline • NLC Patriarch



**BATA BROS.**  
SIMMENTAL CATTLE  
6322 Highway 35  
Adams, North Dakota 58210  
Joe — 701-944-2732  
[jbata@polarcomm.com](mailto:jbata@polarcomm.com)



**Curtis Olafson**  
13043 84th St. NE  
Edinburg, ND 58227  
701-993-8240 or 8450  
[colafson@polarcomm.com](mailto:colafson@polarcomm.com)  
[www.bataolafson.com](http://www.bataolafson.com)

**Performance  
Predictability  
Personal Service**

*Many bulls are being tested for Homozygous Polled*  
View our catalog online at: [www.simmgene.com](http://www.simmgene.com) Auctioneer: Tracy Harl

# Bichler/Johnson 3rd Annual "Quality, Not Quantity" Sale

February 14, 2008 • 1:00 PM • Linton Livestock  
Selling 35 Yearling Bulls and 10 Open Heifers!



**T510R** TNT Platinum x Red Angus EPDs: \* 1 35 60 \* 0 17  
*Calving ease 1/2 blood. Four Sim/Red Angus bulls sell along with three black Sim/Angus.*



**T510N** Perfector x Mr MT EPDs: 6 2 28 54 -2 10 23  
*A Perfector son with a who's who black pedigree. Grandson of our Joker cow who produced the high selling black bull in last year's sale!*



**T513** TNT Platinum x Hart Extra Effort EPDs: 8 3 40 69 1 0 19  
*Out of our Regan donor who is a daughter of Tessa. The Platinum calves are surpassing our expectations. Several Platinum sons sell!*



**T42J** Hooks Shear Force x Big Country EPDs: 11 -1 36 65 2 5 23  
*A Red Shear Force son with an intriguing pedigree, impeccable numbers, performance and phenotype! Out of one of the most prolific cow families in our herd. Definite herd bull prospect!*



**T1413** TNT Tonner x Forster Cprtp EPDs: \* 3 38 68 \* -2 17  
*Powerhouse 1/2 blood! His highly productive dam is in our donor program!*



**251T** SRS J914 Preferred Beef x New Design 878 EPDs: \* 0 29 58 \* 13 27  
*Johnson Bred/Bichler owned. More like her will sell on February 14th!*

Jeff Johnson • Alberta, MN: 701-371-4141 cell  
Doug Bichler • Linton, ND: 701-254-4306 or 701-226-4068 cell



Kevin & Cody Hansen  
Ryder, ND (701) 758-2571  
E-mail: hrsimm@restel.net

Wade & Merri Staigle  
Center, ND (701) 794-3351  
E-mail: mandanlakeranch@westriv.com

Justin & Carrie Deckert  
Arena, ND (701) 943-2477  
E-mail: dsrcows@bektel.com

Ron & Susie Pelton  
Halliday, ND (701) 548-8227  
E-mail: pelsimm@pop.ctctel.com

Dakota Xpress  
Annual Sale  
February 15, 2008  
Bismarck, ND

180 Simmental &  
Sim-Angus Bulls  
100 Bred & Open  
Females

www.dakotaxpress.com

CE	0
BW	-2
WW	30
YW	63
MCE	0
MM	9
MWW	24
CW	-5
YG	.02
MBL	-.12
REA	.24
API	91
TI	61



**SIMANGUS  
8705**

BON VIEW NEW DESIGN 878 X BF 0K34 DAYTONA  
ASA# 2372020 • SimAngus • Black • Bred to: DSR S768

CE	6
BW	3
WW	36
YW	61
MCE	3
MM	8
MWW	26
CW	6
YG	.08
MBL	-.07
REA	-.09
API	84
TI	59



**8744**

ANKONIAN RED KINGSMAN X BOZ REDCAT D162  
ASA# 2372034 • Purebred • Red • Bred to: WS Beefmaker R13

**SELLING • 100 BRED & OPEN FEMALES • 180 SIMMENTAL & SIM-ANGUS BULLS  
FEBRUARY 13, 2008 • FARMER'S LIVESTOCK AUCTION • BISMARCK, ND**

CE	0
BW	5
WW	58
YW	103
MCE	0
MM	-3.0
MWW	26
CW	21.5
YG	.17
MBL	.16
REA	.06
API	82
TI	71



**SIMANGUS  
T923**

KS DATELINE R999 X SRS FRANCHISE F601  
ASA# 9521984 • 205 Adj - 732 • SimAngus • Black

CE	4
BW	4
WW	50
YW	85
MCE	7
MM	6
MWW	31
CW	13.7
YG	.08
MBL	.12
REA	-.09
API	100
TI	73



**T426**

ES DAKOTA NK68 X DSR STONE EDGE C14  
ASA# 9134300 • 205 Adj - 814 • Purebred • Black

CE	8
BW	3
WW	45
YW	85
MCE	3
MM	4
MWW	26
CW	6.4
YG	-.02
MBL	.06
REA	.32
API	93
TI	71



**T435**

LBR CROCKETT X LRS RED REALITY  
ASA# 9134309 • 205 Adj - 779 • Purebred • Red

CE	4
BW	4
WW	50
YW	85
MCE	7
MM	6
MWW	31
CW	13.7
YG	.08
MBL	.12
REA	-.09
API	100
TI	73



**T604**

CR MR DREAM ON G779R X MR BEEF E141  
ASA# Pending • 205 Adj - 840 • Purebred • Black

CE	11
BW	3
WW	42
YW	77
MCE	8
MM	11
MWW	32
CW	14.8
YG	-.03
MBL	.15
REA	.29
API	114
TI	73



**T112**

CCR MR DREAM ON G779R X BH BS CW 600U 1744G  
ASA# 9521324 • 205 Adj - 770 • Purebred • Red

CE	8
BW	2
WW	37
YW	68
MCE	2
MM	5
MWW	23
CW	-15
YG	-.10
MBL	.09
REA	.09
API	98
TI	68



**T952**

MLC DAKOTA SUNRISE P32 X LRS RED REALITY 33J  
ASA# 9521955 • 205 Adj - 769 • Purebred • Red

**Join us for Field Day the afternoon of Jan 30, 2008  
at Mandan Lake Simmental Ranch  
From Center, ND it is 5 miles east, 6 miles north and 1 1/4 miles east**



T35 • Above Par • 205 Wt: 933



T11 • Above Par • 205 Wt: 920



T19 • Shear Force • 205 Wt: 941



S182 • Fall-Born Meyer's Redline



T88 • Crockett • 205 Wt: 911



T69 • Fullback • 205 Wt: 923



Preferred Beef bred to Shear Force



Freedom bred to Gunner



BBS Phaltline bred to Gunner

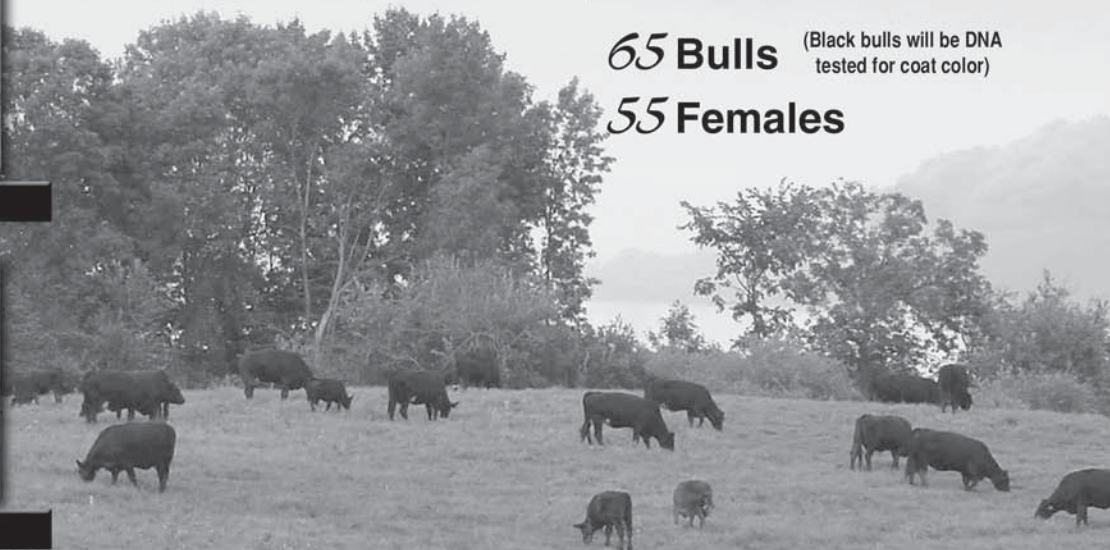
# Vision X

## Simmental & SimAngus Production Sale

*Featuring 120 Exceptional Lots!*

**65 Bulls** (Black bulls will be DNA tested for coat color)

**55 Females**



*February 10, 2008*

**1:00 pm • At the Farm**  
*All sale cattle will be TB-Tested*

*For online catalog, visit:*  
**[www.breedingcattlepage.com](http://www.breedingcattlepage.com)**

# Rydeen Farms

Clearbrook, MN  
(218) 776-3338 • (218) 280-1916  
[rydeen@gvtel.com](mailto:rydeen@gvtel.com)

**Ruffy Brook Simmentals • (218) 776-3457**

# North Dakota Simmental Association Annual Banquet

## *Pioneer Award Winner*

### **Roger Finke**

Love of cows came at an early age for Roger. Each morning and evening at the back end of his father's cows as he helped with the milking. His first experience with registered cattle was with the Hereford breed, also when quite young. Roger graduated from Berthold High School and North Dakota State University. He returned to the family farm after graduation and began farming and ranching full time. Roger and Susan were married in 1975

The following is a list of some of Roger's involvement in the Simmental Breed:

- Began Artificial Insemination of his Hereford cows in 1973 to Galant
- First Halfblood Simmentals were born on Finke Farm in the spring of 1974
- Joined the American Simmental Association on April 8, 1974, ASA #4586
- Joined the North Dakota Simmental Association in 1975
- Served as NDSA Director from 1981-87 and 1991-97
- Served as NDSA President in 1984 & 1985
- Has sold and/or purchased cattle at the NDSA Showcase Sale almost every year since he started in the Simmental business. In 1990 he sold the high-selling bred heifer at the Showcase Sale.
- He has participated in several feeder calf shows and NDSA Bull Test Sales
- Member of the NW ND Select Simmental Group
- Has sold cattle at the Valley City Winter Show and the National Western Stock Show

Roger and Susan have been strong promoters of the Simmental Breed. They have sold cattle to many breeders, as well as many commercial producers. The involvement by Roger and Susan's children in the cattle business was no accident. Heather, Todd, Summer and Annette began helping with chores early. All showed Simmental cattle and established their own herds. Just another addition to the SRF legacy.

To build a herd in those early years took a lot of traveling to sales to find the right individuals that might 'fit' into your herd. I (Bob Grant) spent a lot of time on the road with Roger. Sometimes we included our wives on those trips. A few that come to mind are the Agribition, Bar 5 Sales, NDSA annual meetings and sale, and of course, the trip to Dickinson through Killdeer with the stock trailer behind. We spent a lot of time just north of the border at smaller group Simmental sales, as well as sales across North Dakota with many stops at breeder's ranches.

Many times as we were setting up for the Northwest Select Sale, Roger would comment how much he enjoyed getting together and that after the sale there wouldn't be anything to look forward to for a long time. 'Looking forward to' for Roger is the anticipation of visiting with Simmental friends and looking at the cattle they brought to the sale. He is always looking, evaluation and sizing them up according to what he would like in his herd.

Why do we all know Roger and Susan? I believe it is because they are always ready to visit and find out how things are going with each one of us and our families. They are truly interested in everyone and are proud to be part of

the Simmental family. I hope this relationship continues to be as enjoyable in the future as it has been in the past! Roger definitely has been a pioneer and promoter of Simmental throughout North Dakota. Congratulations!



*Bob Grant introduces Roger Finke as the 2007 Pioneer Award Winner*

## *Promoter of the Year Award*

### **Dave Dockter**

This year's recipient of the Promoter of the Year has been a member of the North Dakota Simmental Association for 23 years. I am sure that most all of us in the room have met the Select Sires truck with the big black hat peaking out over the top of the steering wheel and the friendly wave that always follows.

For 45 years, Dave Dockter has worked in the artificial insemination industry. Since 1981 he has been employed with Select Sires. Dave has helped, not only the Simmental breed incorporate the latest genetics, but just about any breed he could pass a sleeve through has benefited from his expertise. The majority of us here, more than likely have been trained to AI from him as well.

Dave is not your typical company man, an 8 to 5 workday with weekends off is surely not his style. A few years back Dave was kicked in the chute and cracked a few ribs, he gathered himself up and finished the breeding project. Dave not only toughed it through the day, but completed the client list for the rest of the breeding season. Whether you have 15 heifers or 300, he will be there to help in a heart beat! For all you have done for the cattle industry... a big thanks!



*Bob Grant presents Dave Dockter with Promoter of the Year*



*Dalcyce Klain of Ruso, ND was this year's Senior of the Year recipient.*

*NDSA President Kelly Hanson thanks retiring NDSA Board Member Perry Thomas for his years of service.*



*Speaker Annette Steffan, Heart River Genetics, discussed the fine details of embryo transfer work at the Annual Meeting.*



# North Dakota Simmental Association Annual Banquet

## Commercial Producers of the Year

### Scherr Ranch

The North Dakota Simmental Association honored the Scherr Ranch as its 2007 Commercial Cattlemen of the Year at its annual banquet in Bismarck in December. "Scherrs have been strong, loyal supporters of our association and North Dakota Simmental breeders for many, many years," said Doug Bichler, a Simmental Association director. "They've demonstrated how Simmental cattle can contribute to a successful, profitable commercial herd."

Simmental have been the foundation of the Scherr Ranch since the 1970's, when brothers DeWayne and Edward Scherr were still ranching with their parents, Tony (now deceased) and Bernie, on the home place near Hazelton. DeWayne joined the family operation after finishing college at the North Dakota State School of Science in Wahpeton. He started with 10 cows and has grown the herd to more than 700 today.

"I've always liked Simmental," said DeWayne, who along with his wife, Wanda, a 33-year elementary teacher, Edward, and hired hand Michael Kerzman, managers the family's cow-calf operation. "Simmentals have good dispositions, are growthy – so you can push them a little harder – and come in a moderate framed, beefy package."

Scherrs naturally breed all their cows to Simmental bulls and all their heifers to Red Angus bulls. The sires come from an array of seed stock producers in the state.

"When I am shopping, I look for moderate framed, deep bodied bulls with a strong milk background, because we keep back a lot of heifers," DeWayne said. "And while I use EPDs to help make purchase decisions, I still like to use my eyes and to buy from breeders who have good PR with their purchases."

When it comes to calving – which usually runs between April 1 and May 30 at the Scherr Ranch – DeWayne and Edward split the herd between their two places to share the workload and to minimize chances for disease among the newborns.

They offer a first round of vaccinations at the end of May, before the pairs are separated according to color and turned out to pastures as close as next door and as far as 30 miles away.

### Scherr Ranch



Recognizing the importance of conservation practices to the long-term health and productivity of their pastures and cattle, Scherrs are careful to monitor their range conditions. "We run only enough cows to ensure that there is grass for next year," DeWayne said. The Scherrs have also enhanced environmental conditions by adding and enhancing pastures' various water sources – dugouts, dams, wells and water tanks.

After weaning, Scherrs background their calves at the ranch until calves reach 800 or more pounds, or until the middle of January. They raise 500 acres of alfalfa, 300 acres of corn for silage and 70 acres of oats for some of the cattle's feed requirements. With the exception of the upper cut of heifers which Scherrs retain or market to neighbors for replacement heifers, they sell all their calves through Linton Livestock.

DeWayne is proud of the progress they have made with their herd. "It's very rewarding to sell a nice, uniform set of steers or to see a calf being born," he said.

He's quick to credit his family for their commitment to the ranch and its animals. DeWayne remembers Wanda slipping off her boots and diving into one of their ponds to save a calf who fell through the ice during a blizzard in the winter of 1996-97. He also remembers how she and their daughters, Sarah Schmitcke (Michael), Heidi Kaelberer (Wyatt), Heather and Valerie, all took turns on the night watch during calving that year when he threw his back out, and how they've pitched in to help while he heals a broken wrist and Edward heals some broken ribs this winter.

As a grandpa of two and at age 55, DeWayne said he should start thinking about retirement, but he doubts that will be happening any time soon. "Our cattle have been our livelihood for all these years," he said. "I have always loved them and am sure I always will."



Sale Manager Jeff Thomas congratulated the consignors on bringing a top notch set of cattle to this year's sale.



Kylee Myers of Kathryn, ND was presented with the Junior of the Year Award.



Auctioneer Bill Begger once again lended his services to the annual fund raiser and semen auction at the banquet.

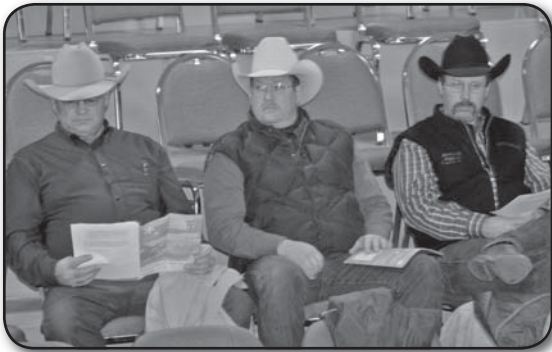


Part of the capacity crowd that gathered for the NDSA Annual Banquet.



Retiring NDSA Board Member Claye Kaelberer accepts his plaque from NDSA President Kelly Hanson.

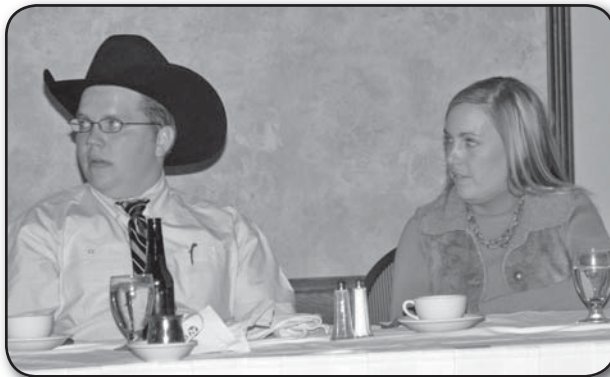
# Scenes from the NDSA Annual Meeting & Banquet



Former ASA Chairman Tom Nelson, Wibaux, MT; Wade Staigle, Center, ND and Kevin Hansen, Ryder, ND take in the Annual Meeting.



ASA Trustee Jim Skillestad, Glendive, MT made his way to the Banquet & Sale.



ASA Representatives Kelly Schmidt and Lacey Robinson were in attendance at the Annual Banquet.



NDSA President Kelly Hanson addresses the crowd at the Annual Meeting while Secretary/Treasurer Bob Grant takes minutes.



NDSA Junior Member Jamison Neshem, Berthold, ND enjoyed the festivities at the Annual Banquet.

ASA Trustee Kevin Thompson, Almont, ND helped hand out the Junior Awards.



Part of the crowd in attendance at the Annual Meeting.

*Hope to see you there next year!*

# KOEPLIN'S BLACK SIMMENTALS

*Annual Production Sale*

**Tx Tuesday, February 5, 2008 Tx**

*2 pm CST • Kist Livestock Auction, Mandan, ND*

**SELLING 47 Black & 4 Red Yearling Bulls**

**EPDS:**

9.7  
1.5  
37.2  
71.4  
1.1  
4.2  
22.8



**642T**

**HUMMER x LUCKY BREAK**

*6 of the last Hummer sons selling!*

**EPDS:**

5.2  
1.7  
31.8  
63.1  
1.9  
7.3  
23.2



**513T**

**NOPHALT x LUCKY BREAK**

*Oct 15 weaning weight: 990 pounds!*

**EPDS:**

6.9  
2.9  
38.7  
65.9  
0.1  
-0.5  
18.9



**811T**

**ABOVE PAR x DAKOTAS BLK ADVANTAGE**

*If 1 is good, 2 is better! 811's twin brother sells too!*

**EPDS:**

0.2  
4.0  
37.9  
72.6  
2.2  
9.1  
28.1



**422T**

**POWERLINE x BDV FESTUS**

*Full brother to 2007's top seller!*

**EPDS:**

5.1  
2.1  
36.3  
64.3  
5.3  
-0.2  
18.0



**140T**

**BAR CK VISION x NOPHALT**

*1 of 6 Vision sons selling!*

**EPDS:**

11.8  
0.1  
32.1  
53.5  
7.4  
5.0  
21.1



**929T**

**DREAM ON x LEACHMAN 600U**

*That's one dark red non-diluter!*

**Terry & Marci Koeplin**

104 4th Ave. NE

Elgin, ND 58533

701-584-3292

Cell: 701-214-8212

koeplinranch@westriv.com

*Where Friends Meet!*

*Visitors always welcome*

*at the ranch!*

**Badger & Kristine Koeplin**

1144 College St.

Fargo, ND 58102

Cell: 701-367-5890

badger.koeplin@ndsu.edu

# 70% Choice and 70% YG 2, Science Says We Can Do It

by Dr. Gene Rouse, Professor Emeritus, Iowa State University  
 Dr. Jerry Lipsey, Executive Vice President, American Simmental Association

The American Simmental Association and JBS Swift & Company have agreed to a fed cattle-marketing grid with near historic rewards for Choice, Yield Grade 2 carcasses. This arrangement has the potential to increase profits for every segment of the beef industry because it rewards superior genetics and management for products that can be produced at less cost. While traditional grids have rewarded superior marbling, few marketing agreements have focused on advancing both crucial factors of carcass value, **quality and meat yield**. Apparently, our industry has lacked the insight to ask seedstock producers, commercial herds and feedyards to deliver 70% Choice and 70% YG 1s and 2s in the form of fed cattle and carcasses.

Perhaps we just thought it was impossible or unreasonable to design genetics and production systems that offer both consumer pleasing meat quality along with high cutability carcass composition. Industry and academic leaders have often suggested fed cattle and carcass targets of 70% Choice or higher, 70% YG 1s and 2s, and 0% outs (USDA Standard, YG 4s and 5s, light weights, heavy weights, etc.). Is there proof this target is achievable?

Perhaps we should first discuss our industry's status and if 70:70:0 is an appropriate goal. Recent USDA grading statistics ([http://marketnews.usda.gov/gear/browseby/txt/NW\\_LSI96.txt](http://marketnews.usda.gov/gear/browseby/txt/NW_LSI96.txt)) indicate approximately 53% of all graded beef carcasses are Low Choice or higher, and approximately 11% of all graded carcasses are Yield Grades 4 or 5. It is more difficult to determine the percentages of Yield Grades 1 and 2 among the carcasses that grade Low Choice or higher; however, review of data from the U.S. Meat Animal Research Center suggests approximately 30% of carcasses grading Choice or higher are Yield Grades 1 and 2. So, a reasonable estimate is that we are currently 53% Choice, 30% YG 1s and 2s, and more than 11% outs (obese, Standard, dark cutter, heavies, lights, etc.). In slight contrast, the 2005 NCBA Beef Quality Audit listed our industry averages at 57:52:22.

It seems very clear that targeting 70% Choice and 70% YG 1s and 2s would improve beef value and reduce cost of production.

The 70:70:0 Goal is our industry leaders' way of encouraging more taste fat and less waste fat. In carcass beef, seam fat, subcutaneous fat and internal fat are referred to as "Waste Fat", while intramuscular fat is considered "Taste Fat". The relationship between Waste Fat and Taste Fat and the inability to identify amounts of intramuscular fat in live cattle has led to inefficiencies in the beef cattle industry. During normal growth of cattle in the finishing phase, when most

of the fat is deposited, ten pounds of waste fat are deposited for each pound of taste fat. This 10:1 concept coupled with the inability to know the existing level of taste fat relative to the amount desired (to grade Choice) results in excess fattening by the beef industry to buy taste fat insurance at a 10:1 cost.

Cattle producers and cattle buyers use their "well-trained eyes" to sort cattle for harvest based on subcutaneous "outside" fat cover, with very little knowledge or ability to determine the level of intramuscular fat or marbling. However, if they, the producers and the buyers, are concerned about quality grades, i.e. marbling level and percent Choice (particularly when Choice - Select price spreads are large), they just feed the cattle longer to buy some insurance, since fat is a late maturing tissue and both fat depots marbling and subcutaneous fat are increasing during the finishing phase.

This insurance program is further enhanced by the selling concept of just selling pounds of live cattle or carcass beef with only small and uncertain premiums based on red meat yield. Overfeeding is implemented particularly when feed resources are cheap relative to replacement cattle costs. Currently, however, feed resource costs are increasing relative to the value of cattle.

The question becomes: How does the cattle industry provide adequate levels of "taste fat" without the added expense of "waste fat"? It is possible for the industry to move in this direction; however, several concepts must be implemented.

- We can select for genetics and develop marbling without excessive fat cover because the genetic correlation or relationship between subcutaneous fat and intramuscular fat is low (approximately 0.2).
- Large numbers of yearling bulls and replacement heifers in the seedstock industry must continue to be evaluated with real-time ultrasound or carcass progeny testing for carcass traits including fat cover and marbling.
- Carcass EPDs must be prioritized over adjusted or actual ultrasound measurements.
- Wise cross breeding to ensure breed complementarity of carcass traits prioritizing carcass EPDs is crucial.
- Beef carcasses must be priced for their individual merit based on retail product and quality grade i.e. the Muscle and Marbling 70:70 grid.

So, if it's possible, who has done it?

The U.S. Meat Animal Research Center (MARC) is the leader of beef genetics product testing in this nation. In January of 2004, MARC released Germplasm Evaluation Program Progress Report No. 22. Go to [www.ars.usda.gov/Main/docs.htm?docid=2340](http://www.ars.usda.gov/Main/docs.htm?docid=2340) for complete details.

**Table A. Adapted from Table 3 MARC Report 22, 2004.**

Sire Breed	Marb Score	USDA Choice %	USDA YG	Carcass Wt
Hereford	526	65.4%	3.19	803
Angus	584	87.6%	3.44	836
Red Angus	590	89.9%	3.44	811
Simmental	527	65.7%	2.72	829
Gelbvieh	506	57.7%	2.60	800
Limousin	504	56.9%	2.43	795
Charolais	517	61.9%	2.54	826

**TABLE A**

**Table A** reports the carcass data from seven popular breeds mated to cows of similar genetic backgrounds. Angus and Red Angus approached nearly 90% Choice carcasses, while Simmental were approximately 66% Choice. It's easy to envision that Simmental X Angus or Simmental X Red Angus can exceed 70% Choice, but it's not so easy to anticipate percentage of Simmental X Angus yield grading USDA YG 1 and 2.

# 70% Choice and 70% YG 2, Science Says We Can Do It

**Table B. Adapted from Tables 6 and 7 MARC Report 22, 2004.**

<b>Sire Breed</b>	<b>%YG 1 and 2</b>	<b>%YG 1 and 2</b>	<b>%YG 4 and 5</b>
	<b>All Carcasses</b>	<b>Low Choice &amp; Higher</b>	<b>All Carcasses</b>
British	33.7%	23.6%	22.9%
Continental	69.8%	37.7%	3.3%

**TABLE B**

**Table B**, from combined Tables 6 and 7 from MARC Report 22, indicates that 33.7% of the British breed-sired carcasses were YG 1s and 2s, while 69.8% of the Continental breed-sired carcasses were 1s and 2s. At the other end of the spectrum, approximately 24% of the British breed-sired steers were YG 4 or fatter, and 3.3% of the Continental breed-sired steer carcasses were fatter than USDA YG 3.9. These data lead to the conclusion that eliminating YG 4s may be a difficult task, even with Continental X British crossbreds.

Unlike the quality grade data presented by sire breed in Table A, scientists at MARC only presented yield grade dispersion data grouped as either British or Continental. However, reviewing the sire breed YG averages in Table A we can make some reasonable assumptions. Red Angus, Angus and Simmental sired carcasses all recorded slightly poorer yield grades than other breeds in their groups. Expecting more than 70% Choice from the SimAngus crossbreds is a reasonable expectation, but superior genetics for meat yield traits (EPDS for fat cover, REA and YG) should be employed in each of these breeds in order to approach the 70% YG 1s and 2s target.

Continental sire breed average for YG in Table A is 2.5, while 3.3% of the Continental sired carcasses were YG 4.0 or fatter. Common sense would suggest that to eliminate YG 4s, group average YG for any harvest group would have to be better than the 2.5 in order for the group to average 70% YG 1s and 2s.

Universities also know the value of producing Continental X British crossbreds. For example, the University of Nebraska (UNL) has suggested that composite seedstock developed from Continental and British breeds optimize a target of 70% Choice and higher, 70% YG 1s and 2s, and 0% outs. Dr. Jim Gosey, Professor, Animal Science Dept., UNL provided the following table.

**Table C. % Non-Conformance to 70-70-0 Target, ref University of Nebraska.**

<b>Item</b>	<b>Breed Type</b>		
	<b>British</b>	<b>Continental</b>	<b>50% Continental 50% British</b>
Yield Grade	32%	0%	14%
Quality Grade	0%	40%	15%

**TABLE C**

**Table D. % Conformance to 70-70-0 Target, ref University of Nebraska.**

<b>Item</b>	<b>Breed Type</b>		
	<b>British</b>	<b>Continental</b>	<b>50% Continental 50% British</b>
% YG 1s and 2s	38%	89%	56%
% Choice & Higher	70	30	55

**TABLE D**

For years, the University of Illinois has maintained Purebred Angus and Simmental herds and SimAngus crossbreds. The following are data submitted to the American Simmental Association database from their herd.

**Table E. University of IL 2005. Angus, SimAngus and Simmental Carcass Data**

<b>Breed Type</b>	<b>Yield Grade Data</b>					
	<b>n</b>	<b>carc wt</b>	<b>BF</b>	<b>REA</b>	<b>YG</b>	<b>%YG 4 and 5</b>
Angus	21	835	0.50	13.1	3.2	14%
SimAngus	27	830	0.37	13.5	2.7	0%
Simmental	40	885	0.32	15.0	2.3	0%

<b>Breed Type</b>	<b>n</b>	<b>Quality Grade Data</b>	
		<b>Marbling</b>	<b>% Choice</b>
Angus	21	Moderate 49	100%
SimAngus	27	Modest 16	85%
Simmental	40	Small 92	75%

**TABLE E**

There is significant proof that our industry can produce quality beef with high efficiency. High production costs and competition from other meats will require more attention to the genetic and management aspects of waste fat vs. taste fat. The American Simmental Association and JBS Swift & Company know price incentives will drive this revolution for marbling and muscle. Call ASA (406.581.7835) or visit our website [www.simmental.org](http://www.simmental.org), or [www.7070beef.com](http://www.7070beef.com) for the details of how you can benefit from the new 70:70 Grid.

# Looking for Performance?

## Ellingson Simmental Performance Bull & Female Sale

Saturday,  
Feb. 16, 2008  
Rugby Livestock, Rugby, ND  
1:00 PM CST



Sire: Mytty In Focus  
MGS: Preferred Beef  
BD: Jan. 24  
Adj. BW: 71  
Adj. 205: 765  
Adj. YW: 1270  
ADG: 3.2  
WDA: 3.6  
CE: 0  
BW: -1  
WW: 37  
YW: 80  
MCE: 0  
MM: 15  
MWW: 34

Ellingson In Focus T708

*Bulls will be  
ultrasound tested and  
guaranteed breeders*

**Selling 50 Simmental &  
SimAngus Yearling Bulls &  
25 Open Yearling Heifers**

**CATALOG AVAILABLE ON [WWW.SIMMGENE.COM](http://WWW.SIMMGENE.COM) OR  
[WWW.BREEDINGCATTLEPAGE.COM](http://WWW.BREEDINGCATTLEPAGE.COM)**

**GUEST CONSIGNORS: M&J Ranch, McCanna: 701-397-5724  
McDonald Farm & Simmental, Inkster: 701-248-3654**



Sire: Top Gun  
MGS: Americana  
BD: Jan. 27  
Adj. BW: 95  
Adj. 205: 823  
Adj. YW: 1571  
ADG: 4.7  
WDA: 4  
CE: 8  
BW: 1  
WW: 43  
YW: 77  
MCE: 3  
MM: 6  
MWW: 27

Ellingson Top Gun T725



Sire: Nophalt  
MGS: Preferred Stock  
BD: Feb. 5  
Adj. BW: 105  
Adj. 205: 903  
Adj. YW: 1606  
ADG: 4.4  
WDA: 4.3  
CE: 4  
BW: 3  
WW: 47  
YW: 89  
MCE: 1  
MM: 5  
MWW: 29

Ellingson Nophalt T754



Sire: Top Gun  
MGS: Americana  
BD: Jan. 29  
Adj. BW: 106  
Adj. 205: 797  
Adj. YW: 1531  
ADG: 4.6  
WDA: 3.9  
CE: 8  
BW: 3  
WW: 43  
YW: 81  
MCE: 3  
MM: 7  
MWW: 28

Ellingson Top Gun T732



Sire: Preferred Beef  
MGS: Nophalt  
BD: Feb. 12  
Adj. BW: 108  
Adj. 205: 930  
Adj. YW: 1542  
ADG: 3.8  
WDA: 4.3  
CE: 6  
BW: 4  
WW: 52  
YW: 94  
MCE: 4  
MM: 7  
MWW: 33

Ellingson All Beef T756



Sire: Hummer  
MGS: Preferred Stock  
BD: Feb. 3  
Adj. BW: 97  
Adj. 205: 863  
Adj. YW: 1582  
ADG: 4.5  
WDA: 4.2  
CE: 9  
BW: 2  
WW: 47  
YW: 89  
MCE: 2  
MM: 3  
MWW: 26

Ellingson Hummer T750

**Ellingson Simmentals**

*Contact us for a  
sale catalog or  
more information:*

**TERRY ELLINGSON & FAMILY**  
701-384-6225  
5065 125th Ave. NE • Dahlen, ND 58224  
[tellings@polarcomm.com](mailto:tellings@polarcomm.com)



# DAKOTA POWER

## SIMGENETICS BULL SALE

Monday, February 11, 2008 • Valley City, ND  
Valley City Winter Show Building • 1:00 PM CST  
*Selling 55 powerful yearling SimGenetic bulls*



Halfblood:  
187 x  
Preffered



Halfblood:  
Canyon x  
Redwood



Purebred  
Dakota x  
Lucky Break



3/4 Blood  
Dream On x  
EA 602C



Halfblood:  
Foresight  
x Fortune



Halfblood  
Grand Slam  
x Zima

### TRIPLE H SIMMENTALS

Kelly, Brain & Jerry Hanson  
701.769.2241

### BLACK TIE SIMMENTALS

Pat Thorson • Tim and Tam Clark  
701.371.8230 or 701. 799.7752

### PERSON SIMMENTALS

Mac Pherson  
701.724.6218 or 701.724.6457

Explore the Opportunities!

# Kenner Simmental

12th Annual Production Sale

February 9, 2008 • Bismarck, ND

Selling 100 Bulls & 50 Bred Females

Red and Black, Purebred and SimAngus



## KS Coronado T22

KBSR Browning x KS Demmi (Perfector)

EPDs: 9 1 37 73 2 9 28



## KS Balboa T376

ES Dakota x NBI Stocky

EPDs: 7 2 44 70 5 5 27



## KS Captn Jack T518

Hooks Shear Force x TNT Tonner

EPDs: 12 1 43 74 3 6 27



## KS Barbosa T180

SAV Net Worth x 600U • SimAngus

EPDs: - 0 34 68 - 11 28



## KS Cortez T298

KS Red Rock x Alberda Traveler

EPDs: - 5 43 77 - 7 28

SimAngus



## KS Jane S248

Remington Red Label x KS Whamuniton

EPDs: 6 4 41 69 8 8 28

AI bred to Shear Force

Sale Consultant  
and Publication  
Representatives:

Archie Fleming  
903-586-8505

Jeff Thomas,  
*The Prairie Star*  
406-581-8859

Kelly Schmidt,  
*the Register*  
406-599-2395

For more information, log on to  
[www.kennersimmental.com](http://www.kennersimmental.com)



Roger, Jeanette, Erika, Jessica & Brett Kenner  
5606 57th St NE • Leeds, North Dakota 58346  
Phone 701-466-2800 • Erika 406-581-1188 • [kennerrj@gondtc.com](mailto:kennerrj@gondtc.com)  
Herdsman: Bryan Leapaldt • 701-466-2553 • 701-739-8764 Cell